

Geosynthetic Bentonite Clay Liner

A needle-punched reinforced geosynthetic clay liner (GCL) with two geotextile layers encapsulating a layer of granular or powder bentonite for sealing, waterproofing and mitigation control of pollutant applications.

GCL uses non-woven geotextile in the upper layer to encapsulate the bentonite swelling clay as carrier, and underneath a woven geotextile layer for dimension stability. Needled punching the layers offers reinforced internal shear. HDPE film lamination offers the best sealing effectiveness.

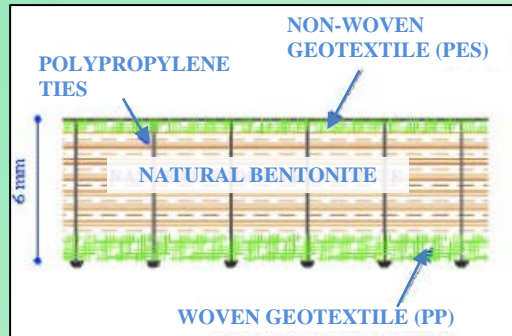


Versatile Sealing Applications of GCL System

- Flood protection
- Waterstop to foundation and basement structure
- Underground waterproofing
- Wetland creation
- Water containment, ponds & lakes

Benefits of GCL System

- Reduce construction costs by replacing compacted clay
- Self-sealing overlaps to ensure integrity
- Quick and easy to install, minimal substrate preparation
- Withstands differential settlement
- Flexible with the structure conformity
- Environmentally safe - no chemicals, additives & non-toxic
- Uniform peel strength provides multi-directional shear strength



Our Service

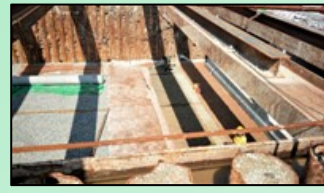
- Design, supply and delivery
- Installation and site report
- Method statement and testing
- System commissioning



Natural stream course waterproofing
May 2009 (HY/2004/02)



Wetland waterproofing
January 2022 (YL/2020/02)



Basement waterproofing



G and E Company Limited

14th Floor, Kiu Yin Commercial Building, 361-363 Lockhart Road, Wanchai, Hong Kong
Tel: 2570 0103 Fax: 2570 0089 e-mail: info@g-and-e.com website: www.g-and-e.com



ver. 7 Apr 2023