

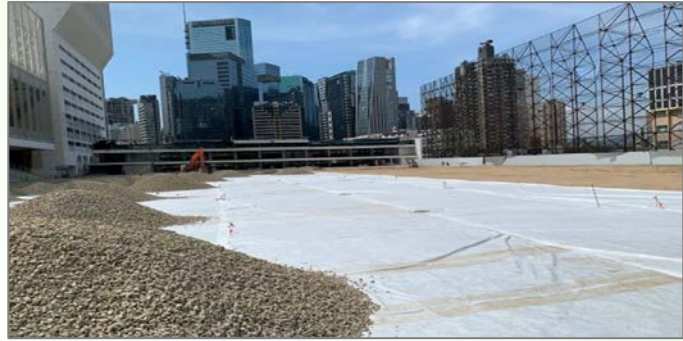
Green Roof

Green roof system comprises several components that work together. We at G and E can provide products for filtering, drainage, water retention and root control.

Filtering Layer – Geotextile

BontexGeo *Bontec NW6*

Bontec NW6 needle punched and thermally bonded non-woven PP geotextiles, designed to offer optimum performance on planting soil and drainage aggregate separation, as well as waterproofing layer protection.



Drainage Layer – ABG *Roofdrain / Deckdrain*

Roofdrain and Deckdrain are lightweight and robust drainage geocomposites. Their drainage and water storage synthetic core thickness range from 25 – 50mm and have drainage and filter functions. Roofdrain provides a water storage reservoir of 4 to 14L per m² to nourish roof garden by capillary break. The geocomposites come in small roll for easy manual handling.



Root Barrier – Solmax *HDPE Membrane*

Root barrier is needed as an impermeable HDPE membrane, which stops root growth from affecting building structures, interfering utilities, protects waterproofing system and retain moisture from leaching away. HDPE geomembrane is an impenetrable layer to inhibits root migration. It is light weight, flexible, durable, and inert to the environment.



Check with us on applications, specification, price, stock and delivery



G and E Company Limited

14th Floor, Kiu Yin Commercial Building, 361-363 Lockhart Road, Wanchai, Hong Kong

ENGINEERING Since 1984 Tel: 2570 0103 Fax: 2570 0089 e-mail: info@g-and-e.com website: www.g-and-e.com

Ver. 1 Oct 2021

